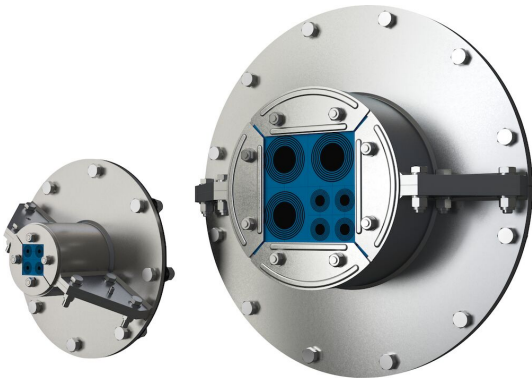


# Roxtec R transit with SLFO/RI

Openable transit for sealing around existing cables/pipes.

The Roxtec R with SLFO/RI is a transit with sleeve for cables and pipes. The compression is integrated in the transit frame so it seals by expansion in the sleeve. The standard sealing modules are adaptable to cables and pipes of different sizes, and can be used to build in spare capacity in the transit. The net on the backside protects during horizontal installations (not included in R 70 and R 75). The frame is easily cut open for installation around existing cables or pipes. The openable sleeve is bolted to the structure.

- Perfect for retrofit



### Product characteristics



Fire rated



Watertight



Gas-tight



EMI protection

### Structure of installation



Metal

### Mounting type



Bolting

## Ratings & certificates

### Fire

- A-CLASS according to IMO 2010 FTP Code
- H-CLASS according to IMO 2010 FTP Code + HC fire load curve

### Tightness

- Gas: 1 bar (catastrophic)
- Water: 2 bar (catastrophic)

### Supports

- Potential equalization
- Electromagnetic shielding

## Frame dimensions

mm/kg

The frame variants below are a limited selection. For the full range of frames and configurations, please visit [roxtec.com](https://www.roxtec.com).

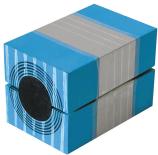
| Product           | Packing space | Aperture dimensions<br>Ø | Weight | Art. no       |
|-------------------|---------------|--------------------------|--------|---------------|
| R 50 AISI316      | 30 x 30       | 50 - 52                  | 0.21   | 5R00000012875 |
| R 75 AISI316      | 40 x 40       | 75 - 77                  | 0.5    | R000000751021 |
| R 70 AISI316      | 40 x 40       | 70 - 72                  | 0.45   | R000000701021 |
| R 75 EMC AISI316  | 40 x 40       | 75 - 77                  | 0.5    | ER00A00751121 |
| R 100 AISI316     | 60 x 60       | 100 - 102                | 0.8    | R000001001021 |
| R 100 EMC AISI316 | 60 x 60       | 100 - 102                | 0.8    | ER00A01001121 |
| R 100 GALV        | 60 x 60       | 100 - 102                | 0.8    | R000001001018 |
| R 125 AISI316     | 80 x 80       | 125 - 127                | 1.1    | R000001251021 |
| R 125 EMC AISI316 | 80 x 80       | 125 - 127                | 1      | 5ER0000004913 |
| R 125 GALV        | 80 x 80       | 125 - 127                | 1.1    | R000001251018 |
| R 127 AISI316     | 80 x 80       | 127 - 129                | 1.1    | R000001271021 |
| R 127 EMC AISI316 | 80 x 80       | 127 - 129                | 1      | ER00A01271121 |
| R 127 GALV        | 80 x 80       | 127 - 129                | 1.1    | R000001271018 |
| R 150 AISI316     | 90 x 90       | 150 - 152                | 1.6    | R000001501021 |
| R 150 EMC AISI316 | 90 x 90       | 150 - 152                | 1.7    | ER00A01501121 |
| R 150 GALV        | 90 x 90       | 150 - 152                | 1.6    | R000001501018 |
| R 70 EMC AISI316  | 40 x 40       | 70 - 72                  | 0.46   | ER00A00701121 |
| R 200 AISI316     | 120 x 120     | 200 - 202                | 2.6    | R000002001021 |
| R 200 EMC AISI316 | 120 x 120     | 200 - 202                | 2.7    | ER00A02001121 |



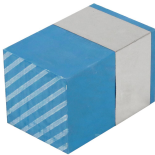
| Product    | Packing space | Aperture dimensions | Weight | Art. no       |
|------------|---------------|---------------------|--------|---------------|
| R 200 GALV | 120 x 120     | Ø<br>200 - 202      | 2.6    | R000002001018 |

## Sealing components

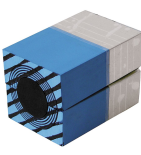
### Sealing components



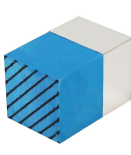
RM ES module with Multidiameter™



RM ES solid compensation module



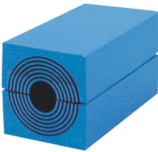
RM PE module with Multidiameter™



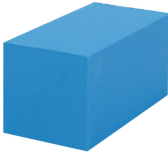
RM PE solid compensation module



Lubricant



RM module with Multidiameter™



RM solid compensation module



SLFO/RI sleeve

For detailed information, please visit [roxtec.com](https://www.roxtec.com).

The product information provided by Roxtec does not release the purchaser of the Roxtec system, or part thereof, from the obligation to independently determine the suitability of the products for the intended process, installation and/or use.

Roxtec gives no guarantee for the Roxtec system or any part thereof and assumes no liability for any loss or damage whatsoever, whether direct, indirect, consequential, loss of profit or otherwise, occurred or caused by the Roxtec systems or installations containing components not manufactured by an authorized manufacturer and/or occurred or caused by the use of the Roxtec system in a manner or for an application other than for which the Roxtec system was designed or intended.

Roxtec expressly excludes any implied warranties of merchantability and fitness for a particular purpose and all other express or implied representations and warranties provided by statute or common law. User determines suitability of the Roxtec system for intended use and assumes all risk and liability in connection therewith. In no event shall Roxtec be liable for indirect, consequential, punitive, special, exemplary or incidental damages or losses.

The Roxtec products are offered and sold in accordance with the conditions of the Roxtec General Terms of Sales. The latest version of the Roxtec General Terms of Sales can be downloaded from <https://www.roxtec.com/en/about-us/about-roxtec/general-terms-of-sales/>

We reserve the right to make changes to the product and technical information without further notice. Any errors in print or entry are no claims for indemnity. The content of this publication is the property of Roxtec International AB and is protected by copyright.

This document was generated on: 2024-05-05